

# Schedule 40

## Trip Lever 600-TL

For most tubs 14" - 16" high

## Trip Lever 650-TL

For most tubs up to 24" high

Study 1.5" Schedule 40 PVC and ABS  
Solvent-Weld Assembly

### SPECIFICATIONS

#### FEATURES:

- Designed for heavy-duty use in hotels, motels, and rental properties
- Strainer body cover catches hair
- Metal handle and strainer body
- Retainer plate for overflow elbow

#### APPROVALS:

- Manufactured in compliance with ASME A112.18.2-2005/CSA B125.2-2005.

#### OPERATION:

- Move lever, located on overflow plate, up to close drain and down to open drain.

#### THREAD SIZE (Strainer Body and Drain Elbow):

- 1 1/2" – 1 1/2 NPSM (Coarse Thread)
- 1.865" Major Diameter (outside thread diameter)
- 11.5 threads per inch

#### PIPING:

- PVC
- ABS

#### OPTIONS:

- Special lengths available:
  - Overflow extension (add code "EXlength")  
example: EX6
  - Drain extension (add code "Dlength") example: D4

#### FINISHES:

Tub Closure:	TRIP LEVER
CP- Chrome Plated	•
BN- Brushed Nickel	•
BO- Bone	•
BS- Biscuit	•
BZ- Oil-Rubbed Bronze	•
CB- Chrome Brushed	•
NP- Nickel Polished	•
PB- Polished Brass	•
WH- White	•
WI- Wrought Iron	•



See price list for complete item numbers and available options.

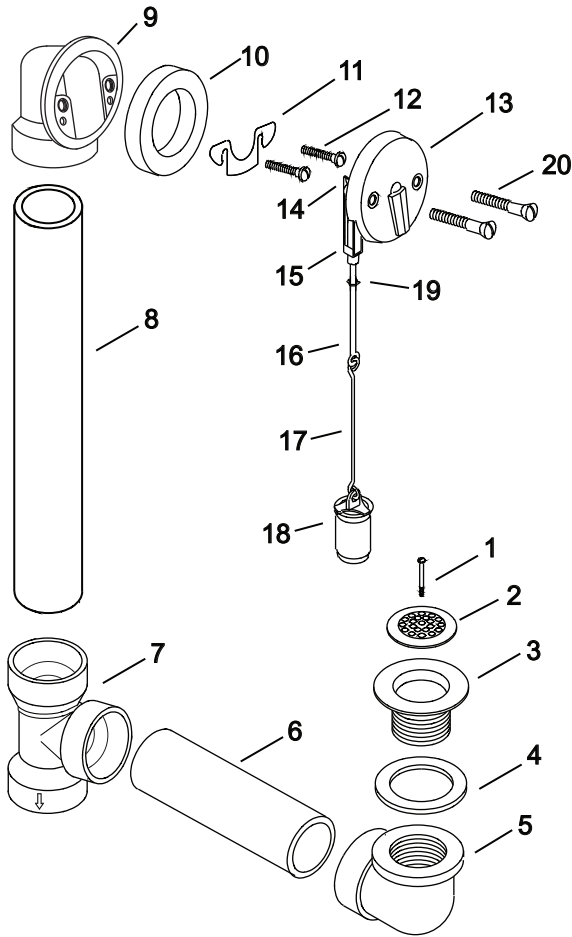
When ordering, please specify complete item number and any applicable option codes.

### WATCO



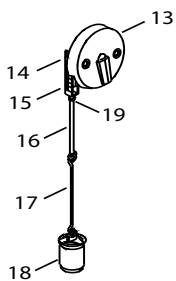
For More Information Contact:  
**WATCO Manufacturing Company**  
 1220 South Powell Road  
 Independence, MO 64057-2724  
 Ph. 816-796-3900 • FAX 816-796-0875  
[www.watcomfg.com](http://www.watcomfg.com)

# 600-TL Series Parts List



Item	Part #	Description
1	01040CP	Strainer Cover Plate Screw
2	01006CP	Strainer Cover Plate
3	11495CP	Zinc Strainer Body, 1.865" - 11.5
4	10696	Drain Ell Washer, gray
5	11008	Drain Ell, Schedule 40, ABS
	14008	Drain Ell, Schedule 40, PVC
6	11605	Pipe, Schedule 40, ABS, 1.5" x 4.625"
	11606	Pipe, Schedule 40, PVC, 1.5" x 4.625"
7	11017	Tee with Seat, Schedule 40, ABS
	14017	Tee with Seat, Schedule 40, PVC
8	11605	Pipe, Schedule 40, ABS, 1.5" x 11.75"
	11606	Pipe, Schedule 40, PVC, 1.5" x 11.75"
9	10096	Overflow Elbow, 2-Hole, Schedule 40, ABS
	10098	Overflow Elbow, 2-Hole, Schedule 40, PVC
10	10675	Overflow Ell Washer, Foam
11	11531	Retainer Plate for 2-hole Schedule 40
12	11540	Retainer Plate Screw
13	10700CP	Trip Lever Faceplate Assembly
14	10930	Cotter Pin Special Annealed
15	10950	Trip Lever Quick Adjust® Clevis
16	10953	Top Linkage Eye Bolt
17	10954	5.25" Double-Loop Wire
18	11005	Drop Cylinder for ABS
	14005	Drop Cylinder for PVC
19	10952	Trip Lever Linkage Nut
20	01024CP	Overflow Plate Screw, 2.25"

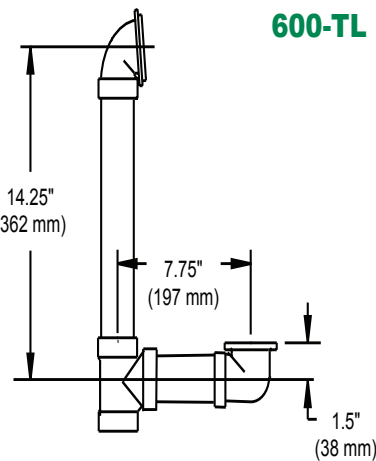
## Roughing-In Dimensions:



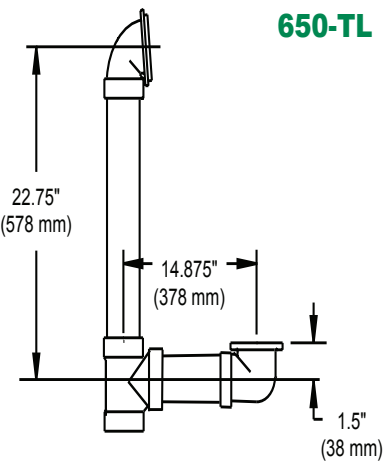
### 10770-(PVC or ABS)-\_\_

Trip Lever faceplate assembly replacement for tubular plastic trip lever bath wastes.

Indicate PVC or ABS and finish desired.



### 600-TL



### 650-TL