

# Tubular Brass

## Model 511 Direct Drain Tub Closure

Sturdy 1.5" 17g Tubular Brass  
Factory-Sealed to  
Brass Direct Drain

### SPECIFICATIONS

#### FEATURES:

- Ideal for making through-the-floor connections.
- Comes with 18.125" length of pipe.
- Direct drain threaded to brass pipe with pipe sealant at factory.

#### PATENTS:

- <https://www.watcomfg.com/patents/>

#### THREAD SIZE:

- 1 $\frac{1}{2}$ " – 11 $\frac{1}{2}$ " NPSM (Coarse Thread)
- 1.865" Major Diameter (outside thread diameter)
- 11.5 threads per inch

#### PIPING:

- 17-gauge tubular brass



See price list for complete item numbers and available options.

When ordering, please specify complete item number and any applicable option codes.

**WATCO**

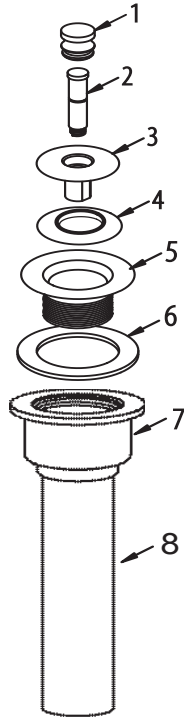


For More Information Contact:  
**WATCO Manufacturing Company**  
1220 South Powell Road  
Independence, MO 64057-2724  
Ph. 816-796-3900 • FAX 816-796-0875  
[www.watcomfg.com](http://www.watcomfg.com)

### Finishes Available in the 511 Series:

Tub Closure:	PUSH PULL®	LIFT & TURN	PRESFLO®	FOOT ACT.
AP - Aged Pewter	•	•	•	
BB - Brushed Bronze	•	•	•	•
BN - Brushed Nickel	•	•	•	•
BO - Bone	•	•		
BS - Biscuit	•	•		
BZ - Oil-Rubbed Bronze	•	•	•	•
CB - Chrome Brushed	•	•	•	•
CP - Chrome Plated	•	•	•	•
NP - Nickel Polished	•	•	•	•
PB - Polished Brass	•	•	•	•
WH - White	•	•		•
WI - Wrought Iron	•	•	•	•

# 511 Series Parts List



Item	Part #	Description
1	01010CP	Knob, Brass
2	11584	Friction Ring (11504) and Post (11508)
3	01013CP	Stopper, Brass
4	11507	Seal, 1 1/16" dia.
5	01016CP	Strainer Body, Brass, 1.865" - 11.5 x 1.25"
6	10696	Drain Ell Washer, 1.5", gray
7	44007	Brass Direct Drain with Internal Threads
#7 FACTORY-THREAD WITH PIPE SEALANT TO #8:		
8	17GA-18.12	Tubular Brass Pipe, 17g, 1.5" x 18.125"
(Length of pipe can be specified.)		

## OPTIONAL TUB CLOSURES FOR 511-SERIES BATH WASTES (PUSH PULL® ALSO SHOWN ABOVE)

**PUSH PULL®  
Coarse Thread**

- 01010CP  
01010\_\_\*
- 11584
- 01013CP  
01013\_\_\*
- 11507
- 01016CP  
01016\_\_\*

**LIFT & TURN  
Coarse Thread**

- 01010CP  
01010\_\_\*
- 11079
- 11088
- 11290CP  
01013\_\_\*
- 11507
- 11492CP  
01016\_\_\*

**PRESFLO®  
Coarse Thread**

- 11145CP  
11145\_\_\*
- 11132
- 11060CP  
11060\_\_\*
- 96039:  
Suction Cup  
for removing  
stopper

**FOOT ACTU-  
ATED  
Coarse Thread**

- 38412-CP  
38412-\_\_\*
- 11492-CP  
01016-\_\_\*

*\*If finish other than Chrome is desired, please use this part number and indicate desired finish.*