

# Flexible

## Flex900 Innovator®

### Models Flex916 / Flex924

Flexible tubing in place of the rigid PVC overflow pipe allows the overflow tubing to easily bend over from a misaligned drain pipe to the overflow hole of the tub.

#### SPECIFICATIONS

##### FEATURES:

- Eliminates the need to use 45° elbows for offsets. Just bend the flexible tubing to correct the misalignment.
- Eliminates all screws and a separate overflow test plug
- Eliminates leaks due to loose overflow attachment
- Eliminates dual inventory of one- and two-hole overflow plates
- Overflow elbow/flexible tubing joint is factory-welded; flexible tubing/sanitary tee joint is designed to cut and fit in the field.

##### Approvals:

- Non-corrugated, flexible tubing.
- IAPMO (UPC) approved, File 2255.
- Complies with ASME A112.18.2-2005/ CSA B125.2-05; and IAPMO PS 69-2006.

Patents: <https://www.watcomfg.com/watco/patents/>

##### Thread Size:

- 1 1/2" – 1 1/2" NPSM (Coarse Thread)
- 1.865" Major Diameter (outside thread diameter)
- 11.5 threads per inch

Piping: Schedule 40, available PVC and ABS

#### ROUGH-IN (RI's) and STOPPER/FACEPLATE (SF's)



Flexible tubing is adjustable to compensate for misalignment.

**Model Flex916:** Fits most tubs 14"-16" high  
Length of flexible tubing = 16"

**Model Flex924:** Fits most tubs to 24" high  
Length of flexible tubing = 24"

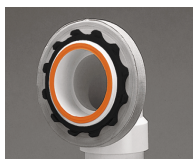


**ADA**

**PRESFLO® (PF)**  
**Foot Actuated (FA) only**



Includes built-in test membrane



Easily remove membrane after test



Snap-on overflow plate. No screws

See price list for complete item numbers and available options.

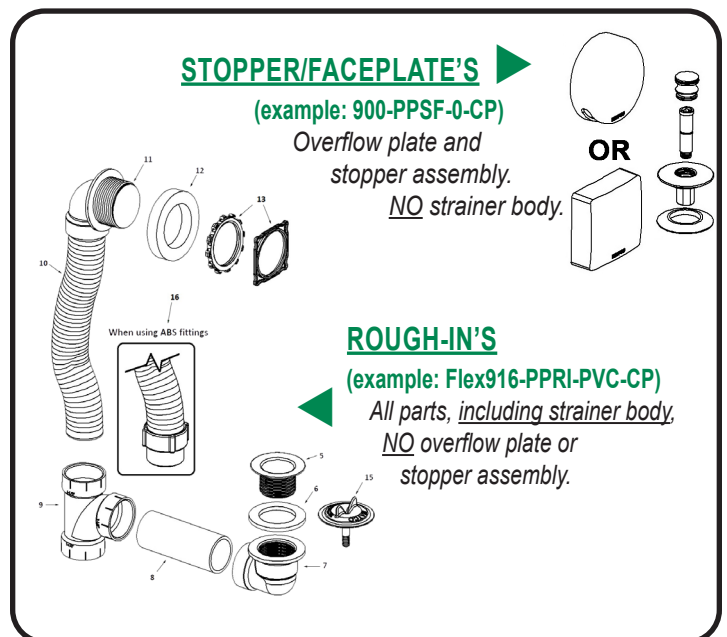
When ordering, please specify complete item number and any applicable option codes.

**WATCO**

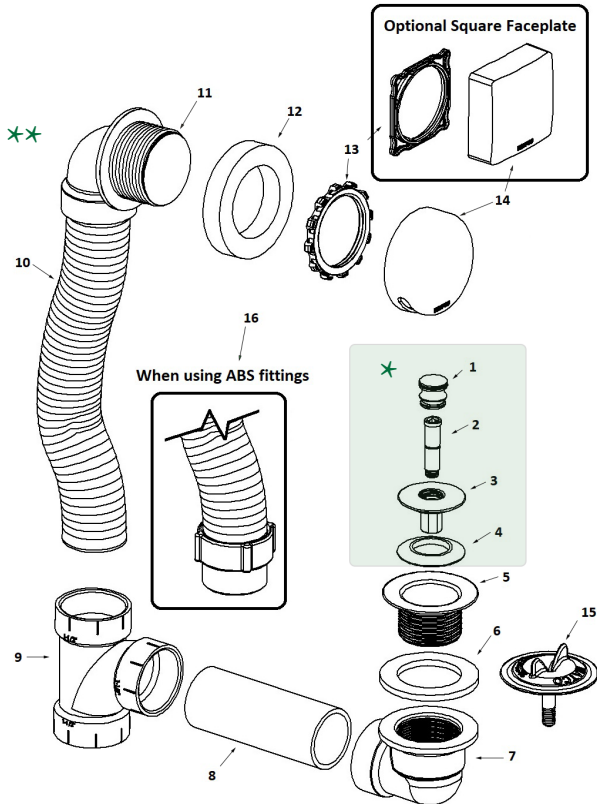


Always a step ahead

For more information, contact:  
**WATCO Manufacturing Company**  
1220 South Powell Road  
Independence, MO 64057-2724  
Ph. 816-796-3900 • 800-821-8576  
Fax 816-796-0875 • 800-399-2826  
[www.watcomfg.com](http://www.watcomfg.com)



# Flex900 Innovator® Parts List



Item	Part #	Description
1	01010CP	PUSH PULL® Knob, Brass
2	11510	Friction Ring and Post (11505 & 11532)
3	01013CP	Stopper, Brass
4	11507	Seal, 1-1/16" dia.
5	01016CP	Strainer Body, 1.865" - 11.5 - 1.25"
6	10696	Drain Ell Washer, 1.5" gray
7	14008	Drain Ell, Schedule 40, PVC
8	11606	Pipe, Schedule 40, PVC, 1.5" x 4.625"
9	14010	Sanitary Tee, Schedule 40, PVC
10	(not sold separately)	Flex916: Flexible Tubing, 1.5" x 16.0" Flex924: Flexible Tubing, 1.5" x 24.0"
<b>#10 FACTORY-WELDED TO #11:</b>		
11	14020	Innovator® Overflow Ell, Schedule 40, PVC
12	10675	Overflow Ell Washer, Foam
13	11121	ABS Star Retainer Nut for Innovator®
	11127	ABS Square Retainer Nut for Innovator®
14	01005CP	Overflow Plate for Innovator®
	01007CP	Square Face Plate for Innovator®
15	11577	Test Plug with "O"-Ring-type Gasket

\* **SF:** (example: 900-PPSE) Parts #1 thru #4, and #14

\*\* **RI:** (example: FLEX916-PPRI) Parts #5 thru #13 and #15

## OPTIONAL TUB CLOSURES FOR FLEX900-SERIES BATH WASTES (PUSH PULL® ALSO SHOWN ABOVE)

**PUSH PULL®**  
Coarse Thread

- 01010CP
- 01010 \*
- 11584
- 01013CP
- 01013 \*
- 11507
- 01016CP
- 01016 \*

**LIFT & TURN**  
Coarse Thread

- 01010CP
- 01010 \*
- 11079
- 11088
- 11290CP
- 01013 \*
- 11507
- 11492CP
- 01016 \*

**PRESFLO®**  
Coarse Thread

- 11145CP
- 11145 \*
- 11132
- 11060CP
- 11060 \*
- 96039:  
Suction Cup  
for removing  
stopper

**FOOT ACTUATED**  
Coarse Thread

- 38412-CP
- 38412-\_\_ \*
- 11492-CP
- 01016-\_\_ \*

*\*If finish other than Chrome is desired, please use this part number and indicate desired finish.*

**Finishes Available in the FLEX900 Series:**

Tub Closure:	PUSH PULL®	LIFT & TURN	PRESFLO®	FOOT ACT.
AP - Aged Pewter	•	•	•	
BB - Brushed Bronze	•	•	•	•
BN - Brushed Nickel	•	•	•	•
BO - Bone	•	•		
BS - Biscuit	•	•		
BZ - Oil-Rubbed Bronze	•	•	•	•
CB - Chrome Brushed	•	•	•	•
CP - Chrome Plated	•	•	•	•
NP - Nickel Polished	•	•	•	•
PB - Polished Brass	•	•	•	•
WH - White	•	•		•
WI - Wrought Iron	•	•	•	•