

# Schedule40

## Insta-Grip™ Shower Drain SPECIFICATIONS



TEST CAP VERSION



HEAVY-DUTY GRID STRAINER



HEAVY-DUTY SNAP-ON  
PROTECTIVE COVER



No compression well seal!

### FEATURES:

- Integrated seal (no compression well seal) for easy, fast installation.
- Installs in less than one minute.
- Eliminates need for glue.
- Includes test cap.
- No-test version available.
- Includes heavy-duty, snap-on grid—20% thicker than competitive grids.
- Drain body includes screwdriver slots.
- Drain is manufactured in dark grey PVC to reduce appearance of dirt and mildew.
- Easy-to-tighten bottom receptor nut to secure drain from below.
- Includes green polycarbonate cover to protect grid finish and prevent debris from entering drain during construction.
- Available in Chrome, Brushed Nickel, Brushed Bronze, Oil-Rubbed Bronze, Matte Black and White finishes.

### APPROVALS:

- Manufactured in compliance with ASME A112.18.2- 2015/CSA B125.2- 2015.

### PATENTS:

- [www.watcomfg.com/patents](http://www.watcomfg.com/patents)

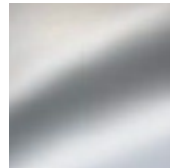
### THREAD SIZE (Body):

- 3/4" -10

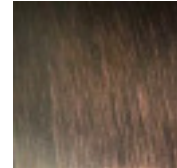
Material: ☐ Dark Grey PVC



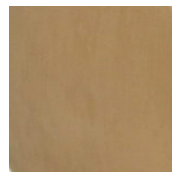
### FINISHES:



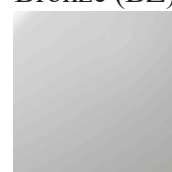
Chrome (CP)



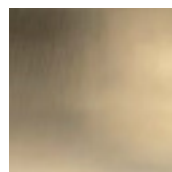
Oil-Rubbed  
Bronze (BZ)



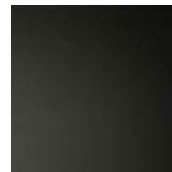
Brushed  
Bronze (BB)



White(WH)



Brushed  
Nickel (BN)



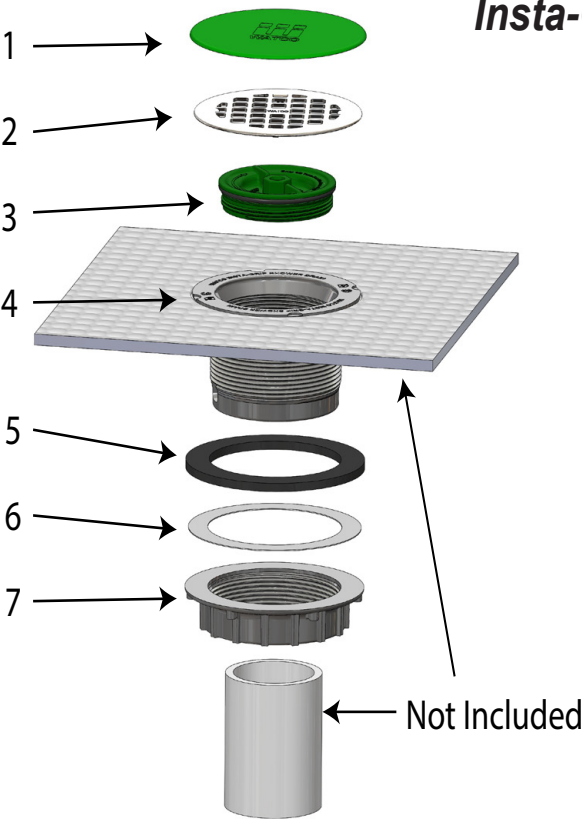
Matte  
Black (WI)



For More Information Contact:  
WATCO Manufacturing Company, LLC  
1220 South Powell Road  
Independence, MO 64057-2724  
Ph. 816-796-3900  
[www.watcomfg.com](http://www.watcomfg.com)

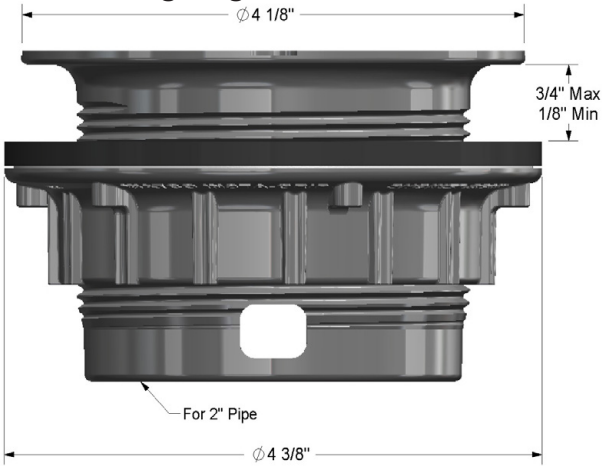
# Insta-Grip™ Shower Drain Parts List

Part # and Finishes Available in the  
Insta-Grip™ Shower Drain:



Item	Part #	Description
1	11117	Green Protective Cover
2	9300G-	Shower Drain Grid (Supply Finish)
3	11570	Insta-Grip Green Test Cap
4	14052	Insta-Grip Shower Drain Body
5	11567	Shower Drain Gasket
6	11157	Shower Drain Slip Washer
7	14053	Insta-Grip Tightening Nut

## Roughing-In Dimensions



## Product Numbers Available in the Insta-Grip™ Shower Drain:

Drain Kit Configuration:  
**Insta-Grip 9400 Series**  
Complete Kit with Trim - Locking  
Ring installed

Drain Kit Configuration:  
**Insta-Grip 9401 Series**  
Locking ring not installed,  
bagged with the test cap.

Drain Kit Configuration:  
**Insta-Grip 9402 Series**  
No Test. No locking ring,  
no test cap.

Finish	Complete Kit With Locking Ring Installed.	Locking Ring Not Installed, Bagged With The Test Cap	No Test. No Locking Ring, No Test Cap.
Brushed Bronze	9400-BB	9401-BB	9401-BB
Brushed Nickel	9400-BN	9401-BN	9401-BN
Chrome Plated	9400-CP	9401-CP	9401-CP
Oil Rubbed Bronze	9400-BZ	9401-BZ	9401-BZ
White	9400-WH	9401-WH	9401-WH
Wrought Iron	9400-WI	9401-WI	9401-WI
No grid.	9400NG	9401NG	9402NG